

Instruction sheet

Look through the catalogue provided and choose the items for your playground. There is also the ground surface to consider.

The following restrictions are placed on your design:

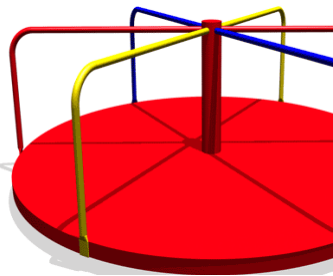
- The playground must be rectangular in shape with an area of 600m^2 (you can decide what length and breadth of rectangle you require).
- You must provide facilities for all age groups.
- The nursery/junior pupils require a section of the playground which has a minimum area of 100m^2 .
- You must not spend more than £7000.

On the last worksheet there is a template for a diagram of your playground, this should be drawn on your flipchart sheet for use in your presentation. Please label the diagram with all lengths and areas. There is space at the bottom for the total price and area of your playground.



Item	Total Area	Total Price





Playground Catalogue



Bark:



Ground Coverings

Soft wood chippings that p
Can become slippery in the
bag covers 3m².

Gravel:



Small chipped stones. Hard and enduring- will last for years! £5 per bag. One bag covers 2m².

L



Lawn squares provide a soft landing area and look great. Need regular maintenance. Each square covers 1m². Each square costs £5. ****SPECIAL OFFER**** Buy one get one half price on squares!!!!

Wooden slates:



Make your own beautiful wooden paths, varnished to provide year's of wear. The slates come pre-cut and measure 1m². Just let us know how many you need. Each plank at the bargain price of £2.50.

Rubber Tiles:



Bouncy and safe, available in 5 colours! Hard wearing and can be cut to fit awkward shapes. Each tile measures 1m² and costs £5. Choose: Red, blue, green, yellow or orange- or why not mix and match?

Stone Tiles:



These thick tiles will never need replacing. White/beige in colour. Each tile measures 2m by 1m and costs £6.

Nursery and KS1 Equipment (age 3-6)

Sand Pit:



Each sand pit measures 3m by 3m and comes with a selection of sand toys and coloured sand. Holds up to 5 children at a time. Cost: £350

S



Protect your sand pit from the elements with this brightly coloured sand pit cover. Covers any sandpit with dimensions 3m by 3m. Only £40

Ball Pen:



Inflatable ball pen. Suitable for both indoor and outdoor use. Outdoors, the pen should be secured and kept covered when not in use. The pen comes with 400 coloured foam balls. Balls are available to purchase separately. Suitable for children under 6, and will comfortably seat 4 children at a time. Requires 6m by 7m. £300.

Foam Balls:



Keep your ball pit topped up with this extra pack of 100 foam balls. Assortment of red, yellow, blue, green and orange colours in every pack. All this fun for only £50.

Mi...



Durable and hard wearing slide. In bright yellow and blue, comes with chunky steps and hand rail to help little ones become co-ordinated. Also has soft landing area. Requires 4m². *** Sale price £250 ***



This wooden junior swing seats two and comes with safety barriers. Requires an area of 5m by 6m and costs just £380.

Parrot Seesaw:



Hours of fun for two kids on this colourful seesaw. Each seat is in the shape of a parrot. Contains foot rests and handles as well as extremely bouncy springs! Special sale price of £225 or 2 for £400. This seesaw requires a space of 2m by 5m.

All-in-one junior set:



Satisfy all kids with this great all in one piece of equipment. Included is a slide, fireman's pole, climbing rope and ladder... and much more! Needs an area of 10m by 10m and costs just £700. Soft ground required.

Climbing frame:



This climbing frame is great for developing kids agility, climbing and balance as well as providing hours of fun. 6 kids can play on it at once. Requires an area of 6m by 5m. Costs £490.

KS2

All in one:



This all in one adventure playground includes a climbing element, 2 swings, a walkway bridge and a slide. You must use soft material as the ground covering in this case for safety reasons. This item costs £850 and covers an area of 10m by 10m.

Flying fox:



This new addition to our catalogue is proving extremely popular for those seeking more thrill in the playground! This one-way 10m zip slide, with rubber button safety seat suspended by a plastic coated chain and support mechanism, transports the rider from a launch platform to a buffer stop at the end of the ride. Apparatus measures 12m by 5m and is priced at £513.

Climbing frame:



Giant spider climbing frame - provides hours of fun! For safety reasons must have rubber tiles covering the ground underneath this apparatus. The frame covers an area of 100m² and costs £314.

S



New Product - This new round swing sits 4 children at a time! Introductory price for this product is £283. This swing requires a minimum area of 7m by 6m.

Slide:



mega swing.

Woo-hoo! This 5m long bumpy slide provides great thrills and excitement. Covers an area of 7m by 5m and costs £240.

For this month only buy this item for 10% less



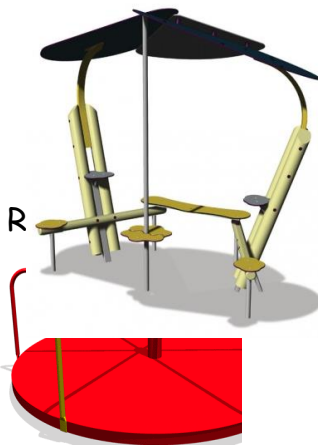
Why go back and forth when you can swing in all directions?! This new swing is multi-directional and seats up to 3 children at once. Soft material required on the ground for safety reasons. Swing covers 7m by 7m and costs £347.

Seesaw:



er:

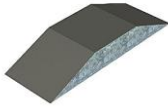
Traditional seesaw which is great fun for 2 users. Soft grounding is required in the area which holds the seesaw. Area covered is 1m by 6m and costs just £175.



Contains 2 lower pod seats and 2 elevated seats as well as a central post which can be used as a foot rest or additional seating. Roof protects against the elements for fun all year round! Requires an area of 8m by 7m and costs £605.

Brightly coloured traditional roundabout. Handles to provide ease of pushing and support whilst on board. Area required is a square of length 4.5m. Cost is £199.

Skateboard ramp:



For the budding Tony Hawks in your school this double ramp provides a great opportunity for kids to practise the basic skateboarding techniques. You will need an area of 1.5m by 4m for the ramp (additional space must be provide around the ramp for safety reasons). This ramp costs just £120.

Gravity Bowl:



A modern take on a classic roundabout - this rotating seat seats one person. The bowl is made from 100% stainless steel to withstand all weather. Area required is 3m² and price is £119.

Special offer: buy two for £180



Quirky space-age sounds, flashing lights and web-like climbing ropes all feature on this ground-breaking and ingenious new play experience. Different electronic games set up from central satellite stations can be used by single users or teams. Shaped like a surreal spaceship resembling a giant arachnid, it brings an "other-worldly" dimension to the playground. Introductory offer of £1500. Requires a maximum area of 100m².

Ground Covering

Type(s): lawn and bark

Write down the type(s) of ground you require in the above box and use the space below to calculate how much this will cost.

lawn 1m^2 costs £5 we need 300m^2
 $300 \times 5 = \text{£}1500$

bark 3m^2 costs £20 we need 300m^2
 $300 \div 3 = 100$ bags
 $100 \times 20 = \text{£}2000$

$$\begin{array}{r} 1500 \\ +2000 \\ \hline 3500 \end{array}$$

Total Price: £3500

Use the space below to check you have covered all 600m^2 of the playground:

Lawn - 300m^2	300
	<u>+ 300</u>
	600
Bark - 300m^2	

Total Area: 600m²

Nursery/ KS1

Items: junior swing, ball pen, sand pit and cover

Use this space to calculate the total price of all this equipment:

1 junior swing = £380	380
	300
1 ball pen = £300	350
	<u>+ 40</u>
1 sand pit = £350	1070

1 sand pit cover = £40

Total Price: £1070

Use this space to calculate the total area needed for this equipment:

1 junior swing = 5m by 6m = 30m ²	30
	42
1 ball pen = 6m x 7m = 42m ²	<u>+9</u>
	81
1 sand pit = 3m x 3m = 9m ²	

Total Area: 81m²

KS2

Items: climbing frame, swing, skateboard ramp, slide

Use the space here to calculate the total price of all this equipment:

1 climbing frame = £314	314
	283
1 swing = £283	350
	240
1 skateboard ramp = £350	<u>+ 180</u>
	1397
1 slide = £240	
2 gravity bowls = £180	

Total Price: £1397

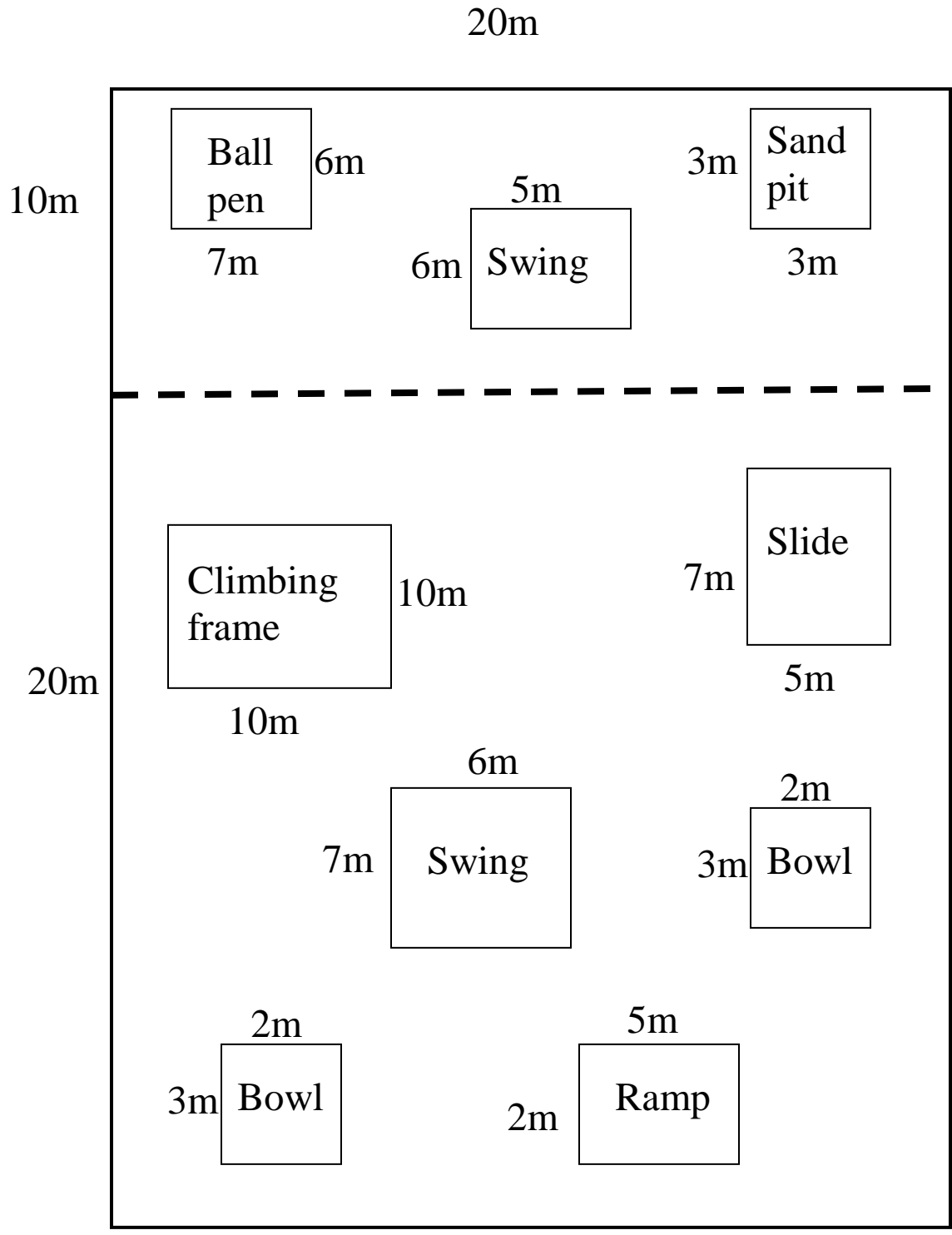
Use this space to calculate the total area needed for this equipment

1 climbing frame = 100m ²	100
	42
1 swing = 7m x 6m = 42m ²	6
	35
1 skateboard ramp = 1.5 x 4 = 6m ²	<u>+ 6</u>
	189
1 slide = 7m x 5m = 35m ²	

2 gravity bowls = $2 \times 3\text{m} = 6\text{m}^2$

Total Area: 189m²

Diagram of playground



Total area used by equipment:

270m²

Total price of playground:

£5967

Ground Covering

Type(s):

Write down the type(s) of ground you require in the above box and use the space below to calculate how much this will cost.

Total Price:

Use the space below to check you have covered all 600m² of the playground:

Total Area:

Nursery/KS1

Items:

Use this space to calculate the total price of all this equipment:

Total Price:

Use this space to calculate the total area needed for this equipment:

Total Area:

KS2

Items:

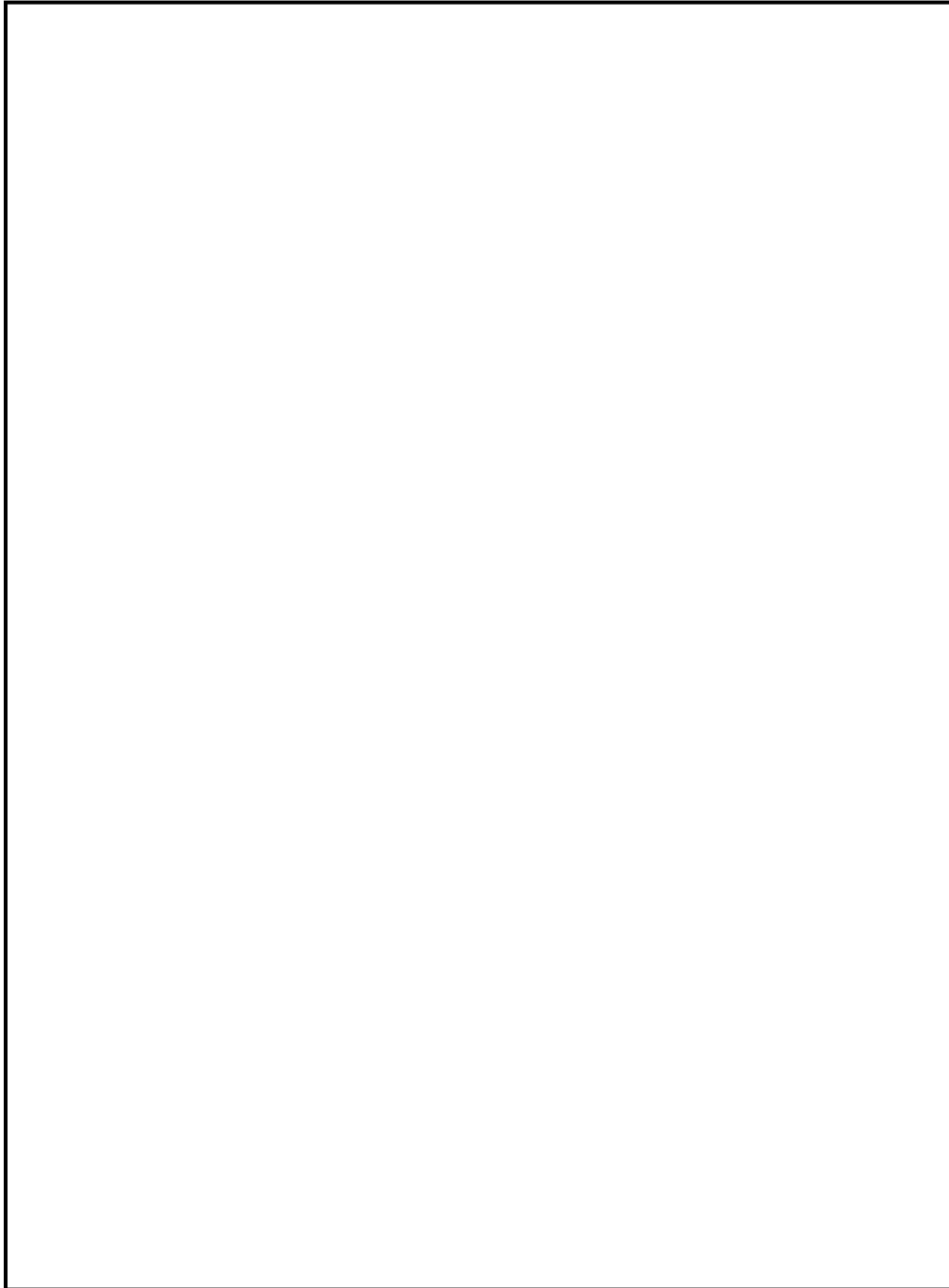
Use the space here to calculate the total price of all this equipment:

Total Price:

Use this space to calculate the total area needed for this equipment

Total Area:

Diagram of playground



Total area used by equipment:

Total price of playground:

Playground Project Review

What did you enjoy about this project?

What did you not enjoy?

What could make this project better?

What did you learn from this project?

What was good about working with your group? Mention one good point for each member.

